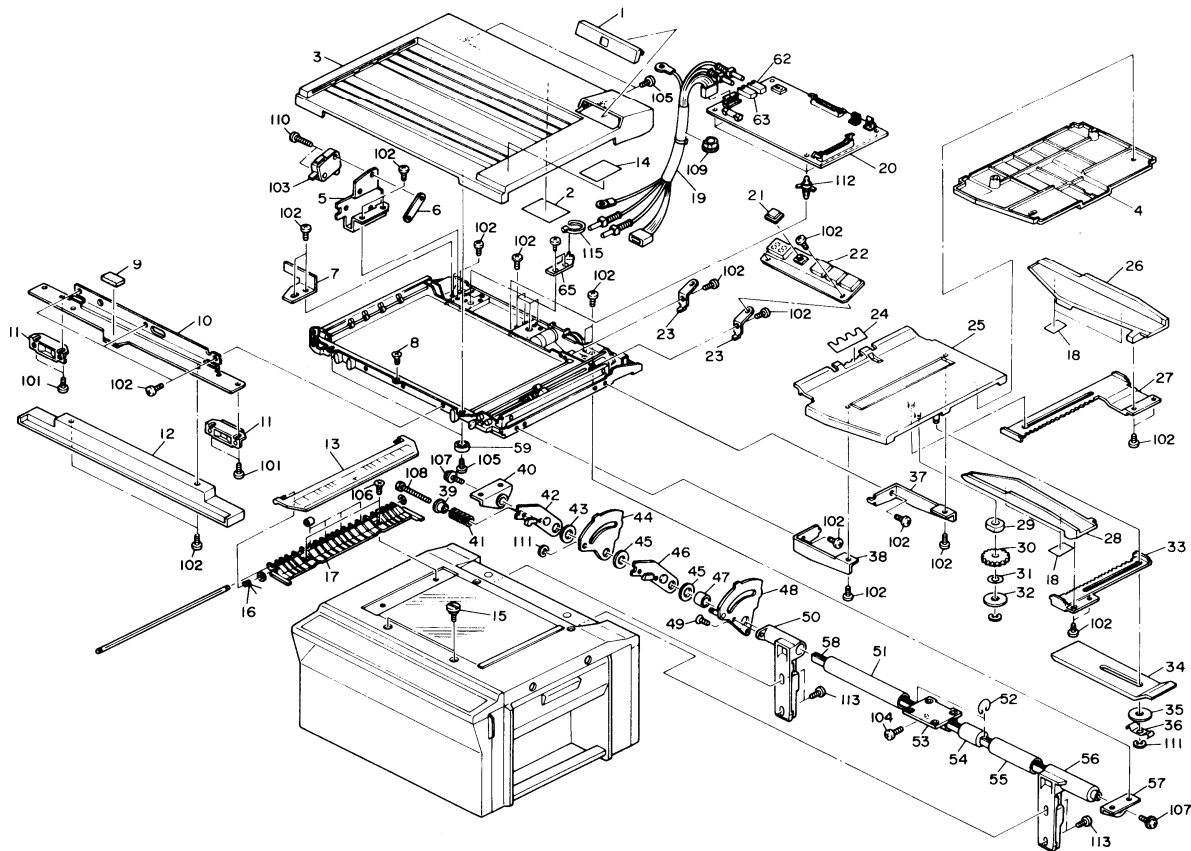


DF-38
(A419)

1. Document Feeder I (A419)	2
2. Document Feeder II (A419)	4
3. Document Feeder II I (A419)	6
4. DFMain Board (A419)	8
5. DFHarness(A419)	10
Parts Index	13

1. DOCUMENT FEEDER I (A419)

Jan. 31, '89



1. DOCUMENT FEEDER I (A419)

Jan. 31, '89

Index No.	Part No.	Description	Q'ty Per Assembly
*	A419 8611	Installation Procedure - English	1
*	A419 8616	Installation Procedure - 5 Language	1
*	5918 4226	Multi-Lingual Decal	1
1	A419 3781	Display Panel - 115V	1
1	A419 3782	Display Panel - 220/240V	1
2	A419 4002	Decal - DIP SW	1
3	A419 3753	DF Cover Ass'y - 220/240V (C)	1
	A419 3749	x/o MB12	
3	A419 3754	DF Cover Ass'y - 115V	1
	A419 3750	x/o MB12	
4	1204 0770	Reed Microswitch	1
4	A419 2752	Original Table Cover	1
5	5918 3255	Brake Plate Bracket	1
6	5056 0509	Nut Plate - Microswitch	1
7	5918 3261	Brake Plate Stopper	1
8	5918 3040	Shoulder Screw - M4	1
9	5918 3394	Seal - 15x30mm	1
10	5918 3390	Grip Plate	1
11	5936 2480	Magnet Catch Ass'y	2
12	A419 3770	Grip	1
13	A419 3880	Flip Scale - LT/LDG	1
13	A419 3882	Flip Scale - A4/A3	1
14	A419 3982	Decal - Misfeed Removal	1
	A419 3981	x/o MB4	
14	A419 3986	Decal - Misfeed Removal - Multi Language (Ricoh Only)	1
		MB5	
15	5875 5510	Shoulder Screw - M5	2
16	5918 3855	Spring - Flip Scale	1
17	A419 3875	Original Exit Guide	1
18	5894 2747	Mylar - Original Guides	2
19	5918 5801	Interface Harness	1
20	A419 5606	DF Main Board	1
21	A419 2645	Key ToP (D)	1
22	A419 5621	Display Board	1

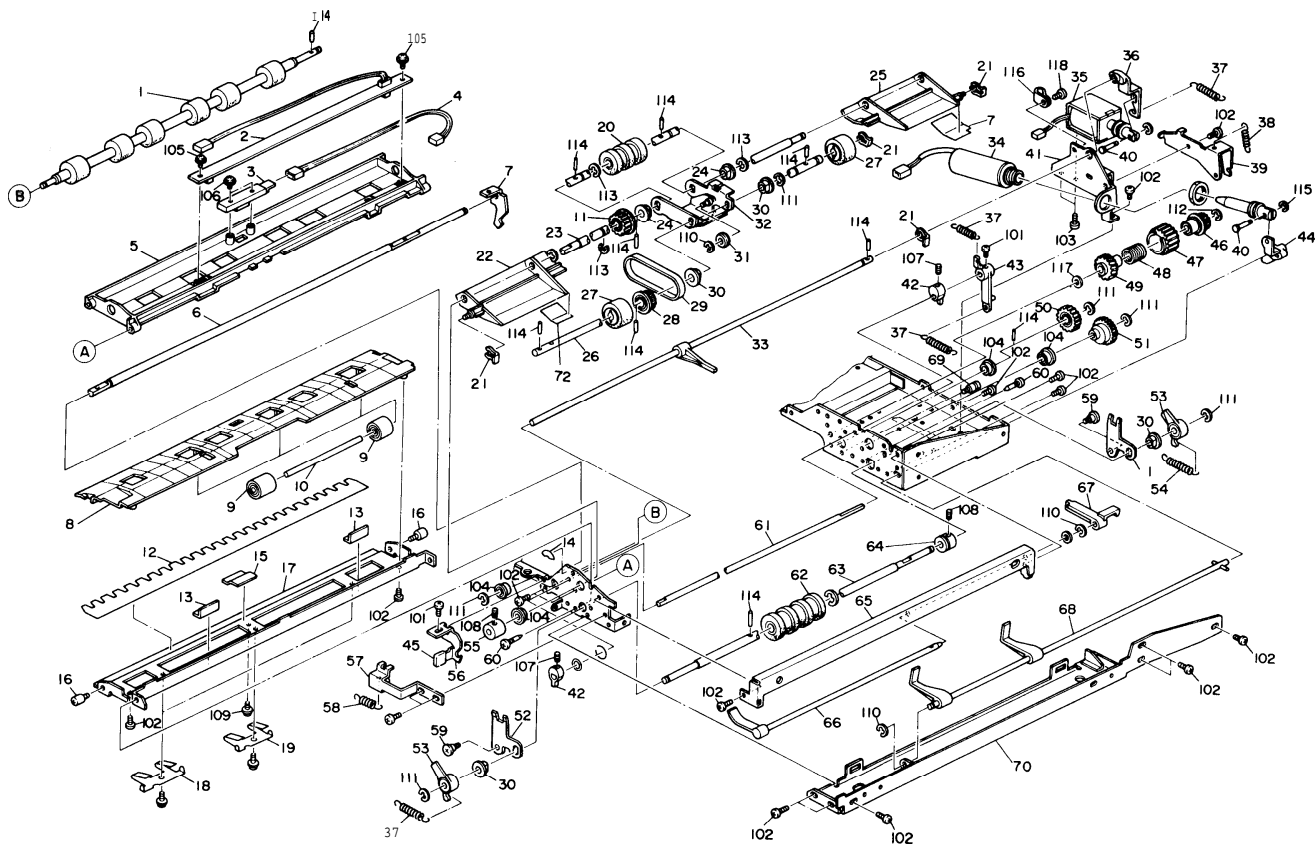
Index No.	Part No.	Description	Q'ty Per Assembly
23	5918 2390	Display Board Bracket	2
24	5918 2725	Mylar - Feed-in	1
25	A419 2718	Original Feed Table - LT/LDG	1
25	A419 2719	Original Feed Table - A4/A3 (C)	1
26	A419 2740	Rear Original Guide	1
27	A419 2728	Rack - Rear Original Guide	1
28	A419 2730	Front Original Guide	1
29	5443 2712	Cork Pad	1
30	5443 2657	Gear - 282	1
31	5443 2713	Wave Washer	1
32	5443 2660	Spacer - 6x22x0.5mm	1
33	A419 2726	Rack - Front Original Guide	1
34	A419 2760	Original Table Extender	1
35	5443 2660	Spacer - 6x22x0.5mm	1
36	5918 2770	Extender Spring Plate	1
37	A419 2776	Rear Table Bracket	1
38	A419 2775	Front Table Bracket	1
39	5403 2048	Bushing - 4mm	1
40	5918 3156	Left Bracket - Torsion Spring	1
41	5875 3287	Spring - Brake Shoe	1
42	5918 3225	Brake Plate Bracket	1
43	5894 3218	AID Pad	1
44	5918 3217	Left Brake Plate	1
45	5894 3218	AID Pad	2
46	5918 3225	Brake Plate Bracket	1
47	5894 3219	Left Spring Holder	1
48	5918 3210	Right Brake Plate	1
49	5894 3215	Brake Stopper	1
50	5918 3230	Left Mounting Plate	1
51	5918 3243	Left Spring Plate	1
52	5875 3553	Ring Holder	1
53	A419 3111	Bracket	1
54	5918 3249	Spring Holder	1
55	5918 3244	Right Spring Pipe	1
56	5918 3235	Right Mounting Post	1

Index No.	Part No.	Description	Q'ty Per Assembly
57		Right Bracket - Torsion Spring	1
58		Torsion Spring - 1.0mm	1
59		Roller Cover	2
61	OTU		
62	OTU		
62		Fiber Output Connector	1
		MB 1	
63		Fiber Input Connector	1
		MB 1	
64	OTU	Cover Shield	2
		MB3	
65		Harness Bracket	1
		MB13	

Index No.	Part No.	Description	Q'ty Per Assembly
101	0343 0060W	Philips Pan Head Screw - M3x6	
	0313 0160W	Philips Pan Head Screw - M3x16 X/X MB1	
102	0314 0060W	Philips Pan Head Screw - M4x6	
103	1204 0770	Reed Microswitch	
104	0316 0100G	Philips Pan Head Screw - M6x10 MB1	
105	0344 0600D	Philips Truss Head Screw - M4x6	
106	A419 3877	Philips Sunken Head Screw - M4x6	
	0324 0060W	x/o MB2	
107	0951 5008W	Philips Screw With Flat Washer - M5x8	
108	0314 0350W	Philips Pan Head Screw - M4x35	
109	1106 0430	Bushing - 13mm	
110	0313 0160W	Philips Pan Head Screw - M3x16	
111	0720 0040E	Retaining Ring - M4	
112	1105 0192	Locking Support	
113	0315 0120W	Philips Pan Head Screw - M5x12	
		MB 1	
114	0345 0080D	Philips Truss Head Screw - M5x8	
		MB10	
115	1105 0047	TY - Wrap	

2. DOCUMENT FEEDER II (A419)

Jan. 31, '89



2. DOCUMENT FEEDER II (A419)

Jan. 31, '89

Index No.	Part No.	Description	Q'ty Per Assembly
1	5918 2155	Registration Roller	1
2	5918 5631	Paper Size Sensor	1
3	5918 5722	Photosensor	1
4	5918 5821	Registration Sensor Harness	1
5	5918 2520	Upper Feed-in Guide	1
6	5918 2168	Release Lever Shaft	1
7	5918 2172	Rear Release Lever	1
8	5918 2610	Lower Feed-in Guide	1
9	5894 2412	Roller	2
10	5894 2413	Relay Roller Shaft	1
11	5894 2186	Separation Roller Pulley	1
12	5918 2623	Paper Guide Mylar	1
13	5875 5501	Sensor Pad	2
14	5918 2781	Decal - Feed-in	1
15	5918 2624	Seal - 12x17x0.7mm	1
16	5413 1875	Knob Screw	2
17	5918 2621	Entrance Guide	1
18	5918 2615	Spring Plate	1
19	5918 2616	Middle Spring Plate	1
20	5894 2181	Upper Separation Roller	1
21	5447 2681	Snap Ring	1
22	5918 2225	Front Feed-in Guide	1
23	5918 2224	Feed Roller Shaft	1
24	5053 0223	Bushing - 8mm	2
25	5918 2226	Rear Feed-in Guide	1
26	5918 2220	Rear Feed-in Roller Shaft	1
27	5894 2171	Original Feed Roller	2
28	5918 2223	Pulley - 24T	1
29	5894 2174	Timing Belt	2
30	5053 0447	Bushing - M6	1
31	5894 2163	Clutch Spring	1
32	5918 2215	Pick-up Roller Bracket	1
33	5918 2375	Pick-up Control Shaft	1
34	5918 5501	Stopper Solenoid	1
35	5918 5515	Pick-up Solenoid	1

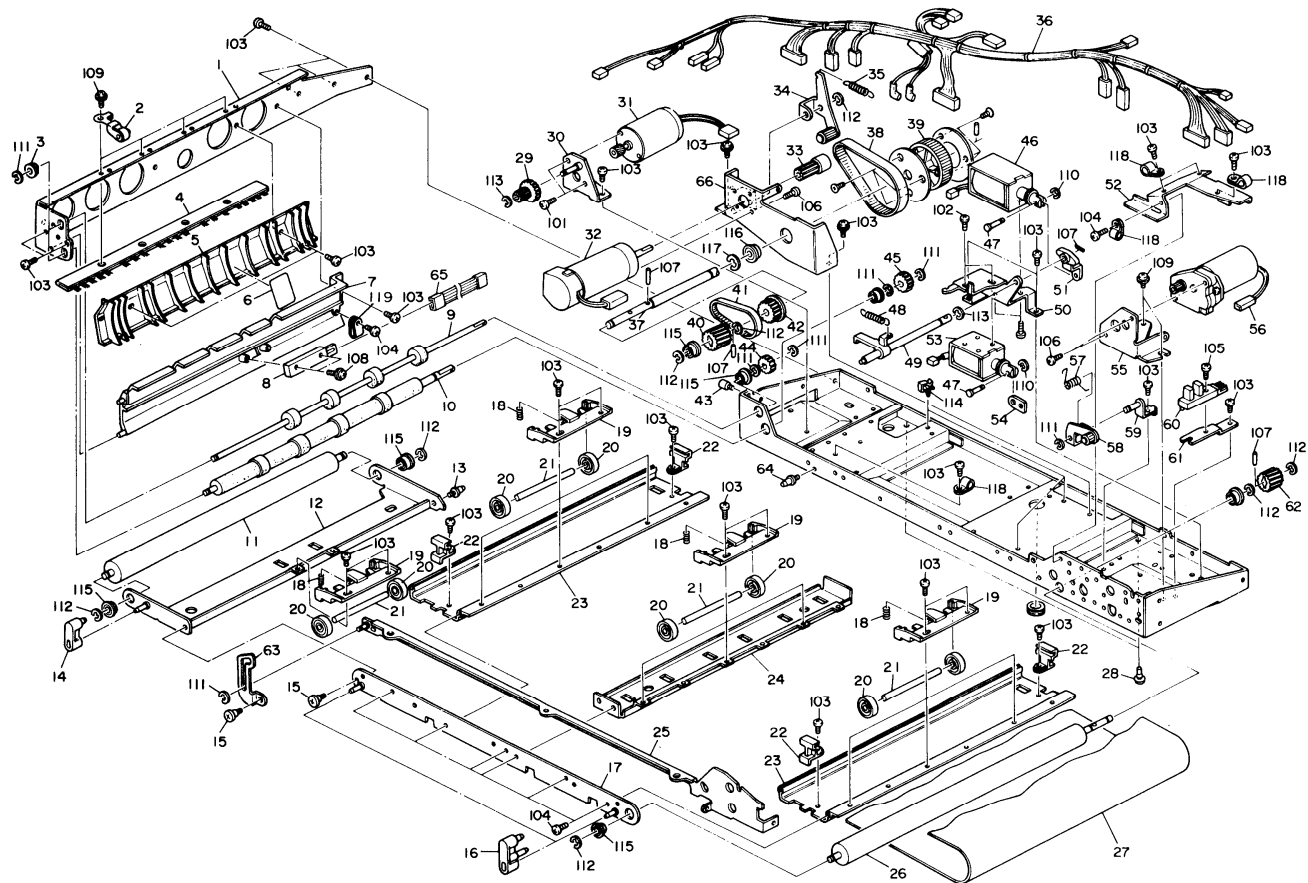
Index No.	Part No.	Description	Q'ty Per Assembly
36	5918 2371	Pick-up Lever	1
37	5894 2176	Spring - Detent Arm	1
38	5894 2293	Spring - Original Stopper	1
39	5918 2373	Stopper Bracket	1
40	5894 2229	Solenoid Pin	2
41	5918 2370	Pick-up Solenoid Bracket	1
42	5918 2105	Eccentric Cam	2
43	5918 2340	Release Arm	1
44	5918 2372	Stopper Lever	1
45	6754 1242	Knob Cap	1
45	A411 2531	Knob Cap	1
46	5918 2158	Pulley - 25T	1
47	5918 2164	Clutch Sleeve	1
48	5918 2163	Clutch Spring	1
49	5918 2159	Gear - 24T	1
50	5918 2156	Gear - 24T	1
51	5918 2230	Gear - 45T	1
52	A418 2102	Front Adjusting Plate	1
52	5918 2102	Adjusting Plate X/X MB6	2
53	5918 2106	One Way Bearing Lever	1
54	5894 2176	Spring - Detent Arm	1
55	5918 2210	Collar - 6mm	1
56	5918 2170	Front Release Lever	1
57	5918 2108	Adjusting Plate	1
58	5201 2832	Feed Clutch Spring	1
59	5413 2298	Stepped Screw - M4	1
60	5446 2824	Screw - Duplex Guide Plate	2
61	5918 2103	Eccentric Cam Shaft	1
62	5894 2183	Lower Separation Roller	1
63	5918 2101	Separation Roller Shaft	1
64	5894 2264	Collar	1
65	5918 2252	Right Stay	1
66	5918 2260	Feed-in Sensor Feeler	1
67	5918 2250	Sensor Actuator	1
68	5918 2150	Feed-in Stopper	1

Index No.	Part No.	Description	Q'ty Per Assembly
69	5403 2049	Spring Anchor	1
70	A419 3355	Right Frame	1
71	A418 2103	Rear Adjusting Plate MB1	1
72	A418 2225	Front Mylar Seal - Paper Feed MB11 MB8	1
73	A418 2226	Rear Mylar Seal - Paper Feed MB11 MB8	1

Index No.	Part No.	Description	Q'ty Per Assembly
101	0313 0060W	Philips Pan Head Screw - M3x6	
102	0314 0060W	Philips Pan Head Screw - M4x6	
103	0313 0040W	Philips Pan Head Screw - M3x4	
104	0805 3145	Ball Bearing - 6x12x4mm	
105	0965 4006W	Tapping Screw - M4x6	
106	0965 3010W	Tapping Screw With Flat Washer - M3x10	
107	0574 0040E	Hexagon Headless Set Screw - M4x4	
108	0573 0040W	Hexagon Headless Set Screw - M3x4	
109	0951 4006W	Philips Screw With Flat Washer - M4x6	
110	0720 0030E	Retaining Ring - M3	
111	0720 0050E	Retaining Ring - M5	
112	0720 0040E	Retaining Ring - M4	
113	0720 0060W	Retaining Ring - M6	
114	0632 0100E	Pin -M2x10	
115	0720 0025E	Retaining Ring - M2.5	
116	1105 0008	Nylon Clip - 2N MB1	
117	0807 4005	Washer - 5.1x8x0.2mm MB1	
118	0314 0080W	Philips Pan Head Screw - M4x8 MB1	

3. DOCUMENT FEEDER III (A419)

Jan. 31, '89



4. DF MAIN BOARD (A419)

Jan. 31, '89

CAPACITOR

SYMBOL NO.	INDEX NO.
C101	135
C102	137
C103	137
C104	138
C105	139
C106	136
C108	141
C109	141
C110	144
C111	144

SYMBOL NO.	INDEX NO.
C112	144
C113	144
C114	143
C115	144
C116	144
C117	144
C118	144
C119	144
C120	144
C121	144

SYMBOL NO.	INDEX NO.
C122	144
C123	144
C124	144
C125	144
C126	144
C127	144
C128	144
C129	144
C130	144
C131	144

SYMBOL NO.	INDEX NO.
C132	144
C133	144
C134	144
C135	144
C136	144
C138	144
C140	142
C141	153
C142	140
C143	144

SYMBOL NO.	INDEX NO.
C144	144
C145	144
C146	144
C147	144
C148	137
C149	139

RESISTOR

SYMBOL NO.	INDEX NO.
R101	154
R102	126
R103	157
R104	128
R105	154
R106	129
R107	129
R108	159
R109	158
R110	127

SYMBOL NO.	INDEX NO.
R111	155
R112	155
R113	156
R114	156
R115	146
R116	146
R117	146
R118	146
R119	146
R120	146

SYMBOL NO.	INDEX NO.
R121	146
R122	146
R123	146
R124	146
R125	146
R126	146
R127	152
R128	152
R129	152
R130	152

SYMBOL NO.	INDEX NO.
R131	149
R132	149
R133	149
R134	149
R135	149
R136	149
R137	149
R138	149
R139	145
R140	145

POTENTIOMETER

TEST PIN

SYMBOL NO.	INDEX NO.
R141	145
R142	145
R143	145
R144	145
R145	149
R146	149
R147	149
R148	148
R149	149
R150	145

SYMBOL NO.	INDEX NO.
R151	145
R152	145
R153	145
R154	145
R155	145
R156	145
R157	145
R158	150
R159	146
R160	149

SYMBOL NO.	INDEX NO.
R162	152
R163	149
R164	149
R165	149
R166	149
R167	149
R168	149
R169	149
R170	149
R171	149

SYMBOL NO.	INDEX NO.
R172	149
R173	146
R174	150
R175	150
R176	147
R177	149
R178	147
R179	149
R180	149
R181	147

SYMBOL NO.	INDEX NO.
R182	147
R183	149
R184	147
R185	149
R186	149
R187	147
R188	149
R189	149
R190	146
R191	149

SYMBOL NO.	INDEX NO.
R192	149
R193	148
R194	151
R195	148
R196	151
R197	148
R198	150
R199	151
R200	147
R201	151

SYMBOL NO.	INDEX NO.
R202	150
R203	148
R204	148
R205	148

SYMBOL NO.	INDEX NO.
VR101	131
VR103	132
VR104	133
VR105	133

SYMBOL NO.	INDEX NO.
TP101	101
TP102	101
TP103	101
TP104	101
TP105	101

IC

SYMBOL NO.	INDEX NO.
IC101	116
[C102	2
SOCKET	107
[C103	122
HEAT SINK	160
IC104	119
IC105	118
IC106	117
IC107	124

SYMBOL NO.	INDEX NO.
IC108	120
IC109	115
IC110	121
IC111	123
IC112	112
IC113	4
IC114	3
IC115	123
IC116	123

LED

SYMBOL NO.	INDEX NO.
LED101	114
LED102	114
LED103	114
LED104	114
LED105	114
LED106	114

CONNECTOR

SYMBOL NO.	INDEX NO.
CN101	103
CN102	102
CN103	104
CN104	105
CN105	106

DIODE

SYMBOL NO.	INDEX NO.
D101	113
D103	113
D104	113

FUSE

SYMBOL NO.	INDEX NO.
FU101	108
FU102	109
F101	111
F102	111

TRANSISTOR

COIL

SYMBOL NO.	INDEX NO.
L101	134

OSCILLATOR

SYMBOL NO.	INDEX NO.
OSC101	125

DIP SW.

SYMBOL NO.	INDEX NO.
DIP101	110

RESISTOR ARRAY

SYMBOL NO.	INDEX NO.
RAY101	130

4. DF MAIN BOARD (A419)

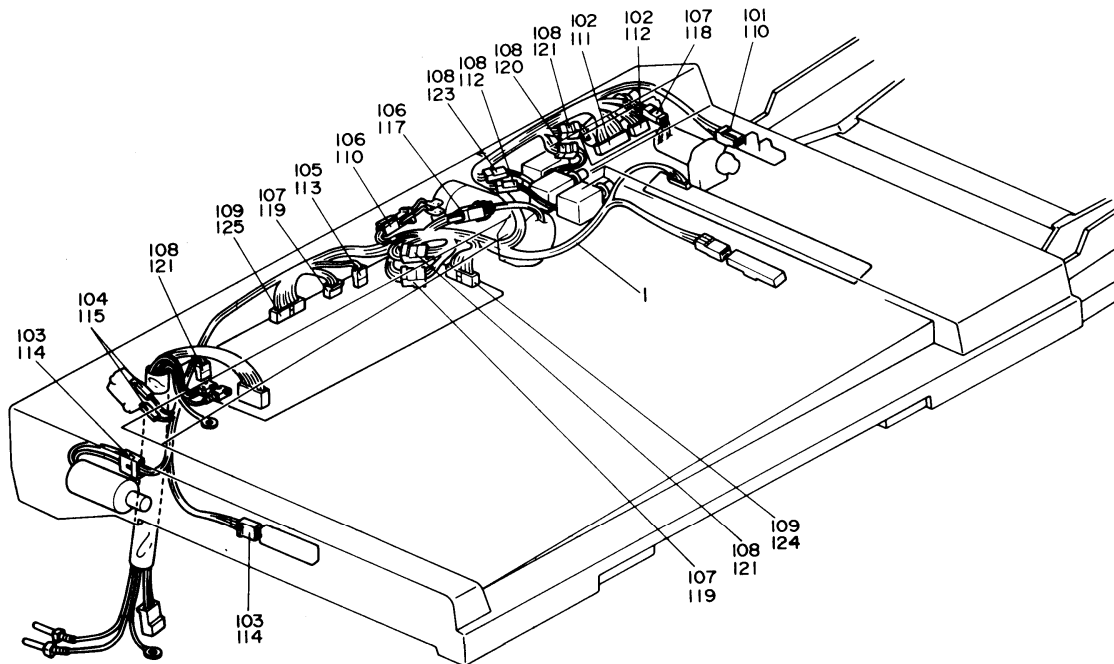
Jan. 31, '89

Index No.	Part No.	Description	Q'ty Per Assembly
●	A419 5606	DF Main Board	
●	A419 5607	IC - MBM2764-25	
3	5918 5701	IC - HCTL-1	
4	5918 5702	IC - HCTL-2	
101	1101 0328	Connector Pin Contact	
102	1102 0958	Connector - 2P	
103	1103 0881	Connector - 4P	
104	1103 1726	Connector - 4P	
105	1103 3020	Connector - 20P	
106	1103 3022	Connector - 30P	
107	1104 0271	Connector - 30P	
108	1104 0333	LSI Socket - 28P	
109	1107 0413	Fuse - 3A	
110	1204 0883	DIP Switch	
111	1400 0100	Transistor - 2SA683	
112	1401 0329	IC - MP4503	
113	1401 0832	Diode - DSA1A1	
114	1403 0308	LED - TLR-102A	
115	1407 0604	IC - TC40498P	
116	1407 1026	IC - SN74LS373N	
117	1407 1094	IC - HD74LS93P	
118	1407 1334	IC - UPD7810G	
119	1407 1337	IC - MN1215Q	
120	1407 1348	IC - TD62304P	
121	1407 1535	IC - TD62308AP	
122	1408 0076	IC - μ PC14132	
123	1408 0099	IC - HA17901P	
124	1408 0408	IC - PST518A	
125	1503 0070	Ceramic Oscillator - 10MHz	
126	1600 0544	Resistor - 1KQ 1W	

index No.	Part No.	Description	Q'ty Per Assembly
127	1600 0569	Resistor - 0.2Q 1W	
128	1600 0576	Resistor - 33Q SW	
129	1601 1732	Resistor - 390Q 1W	
130	1601 7326	Resistor Array - 10KQ	
131	1601 8145	Variable Resistor - 5KQ	
132	1601 8147	Variable Resistor - 10KQ 0.5W	
133	1601 8157	Variable Resistor - 100KQ	
134	1602 0953	Coil - 800 μ H 2.5A	
135	1604 1358	Capacitor - 1000 μ F 10V	
136	1604 1381	Capacitor - 4.7 μ F 50V	
137	1604 1382	Capacitor - 10 μ F 50V	
138	1604 1383	Capacitor - 22 μ F 50V	
139	1604 1386	Capacitor - 100 μ F 50V	
140	1606 0658	Capacitor - 0.1 μ F 50V	
141	1606 1184	Capacitor - 27PF 50V	
142	1606 1336	Capacitor - 1000PF 50V	
143	1606 1451	Capacitor - 0.1 μ F 50V	
144	1604 1452	Capacitor - 0.01 μ F 50V	
145	1610 0045	Resistor - 270Q 1/8W \pm 5%	
146	1610 0053	Resistor - 1KQ 1/8W \pm 5%	
147	1610 0057	Resistor - 1.5KQ 1/8W \pm 5%	
148	1610 0065	Resistor - 3.3KQ 1/8W \pm 5%	
149	1610 0067	Resistor - 4.7KQ 1/8W \pm 5%	
150	1610 0071	Resistor - 10KQ 1/8W \pm 5%	
151	1610 0079	Resistor - 22KQ 1/8W \pm 5%	
152	1610 0107	Resistor - 1MQ 1/8W \pm 5%	
153	16100286	Capacitor - 100PF 50V \pm 10%	
154	1611 4103	Resistor - 10KQ 1/4T \pm 5%	
155	1611 4222	Resistor - 2.2KQ 1/4T \pm 5%	
156	1611 4330	Resistor - 330Q 1/4T \pm 5%	
157	1611 4472	Resistor - 4.7KQ 1/4T \pm 5%	
158	1611 4562	Resistor - 5.6KQ 1/4T \pm 5%	
159	1611 6821	Resistor - 820Q 1/2T	
160	1605 0767	Heat Sink MB 1	

5. DF HARNESS (A419)

Jan. 31, '89



5. DF HARNESS (A419)

Jan. 31, '89

Index No.	Part No.	Description	Qty Per Assembly
1	5918 5811	Main Harness	1

Index No.	Part No.	Description	Qty Per Assembly
101	1100 1089	Socket - Mate-N-Lock	
102	1100 1147	Socket - Mate-N-Lock	
103	1100 1159	Socket - Mate-N-Lock	
104	1100 1169	Fastening Receptacle	
105	1100 1190	Socket - Mate-N-Lock	
106	1100 1240	Socket - Mate-N-Lock	
107	1100 1327	Contact	
108	1100 1328	Contact	
109	1100 1348	Pin Contact	
110	1102 1089	Connector - 3P	
111	1102 1244	Connector - 15P	
112	1102 1289	Connector - 6P	
113	1102 1350	Connector - 5239-2P	
114	1102 1396	Connector - 2P	
115	1102 1408	Receptacle Housing	
116	1102 1515	Connector - 2P	
117	1102 1517	Connector - 4P	
118	1102 1910	Connector - 2P	
119	1102 1912	Connector - 4P	
120	1102 1964	Connector - 2P	
121	1102 1965	Connector - 3P	
122	1102 1970	Connector - 2P	
123	1102 1971	Connector - 3P	
124	1103 0660	Connector - 16P	
125	1103 0662	Connector - 20P	